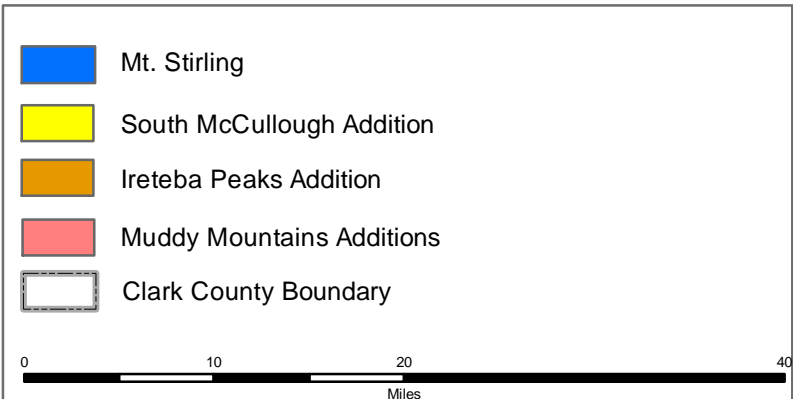
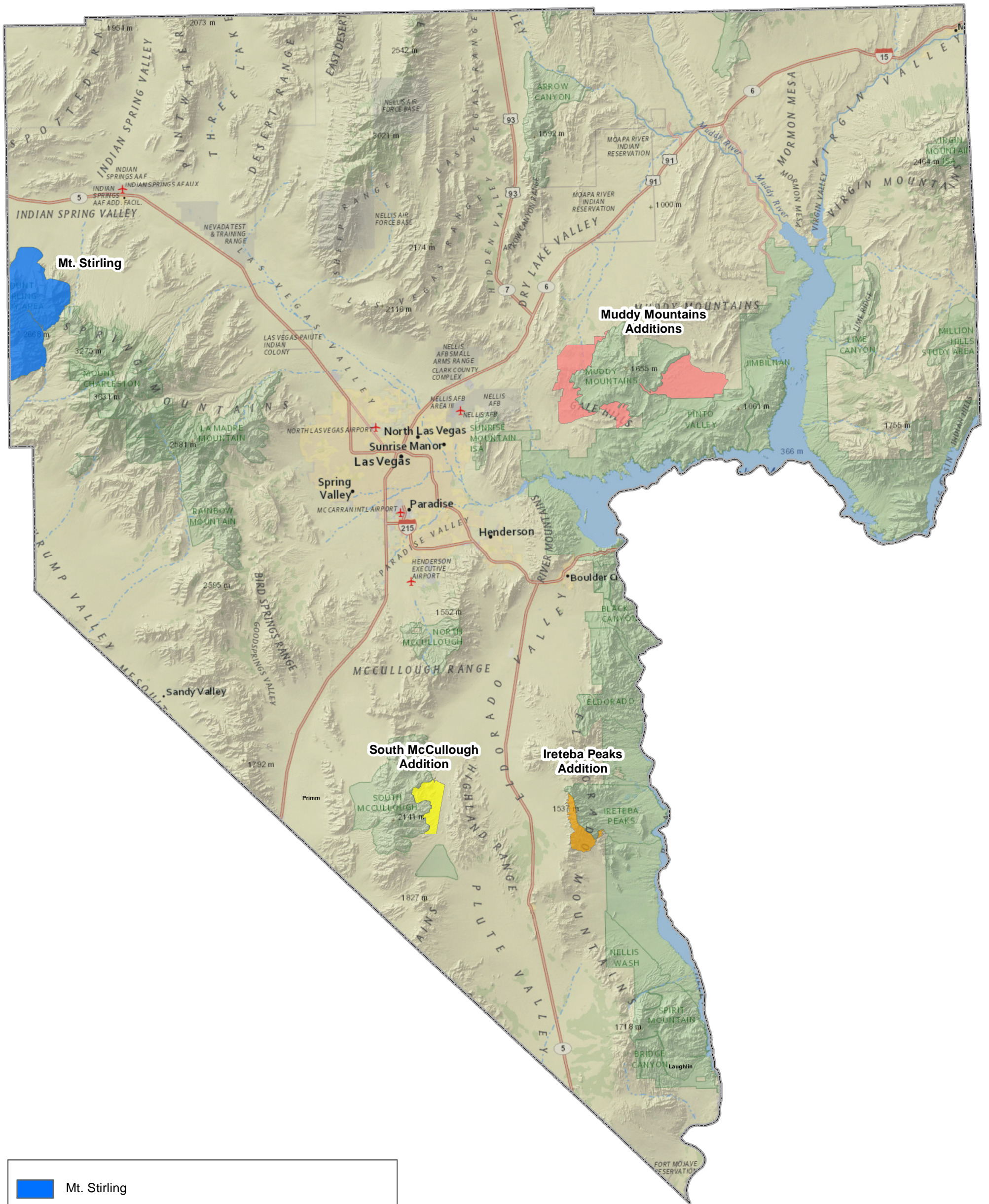
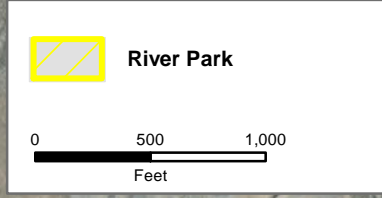
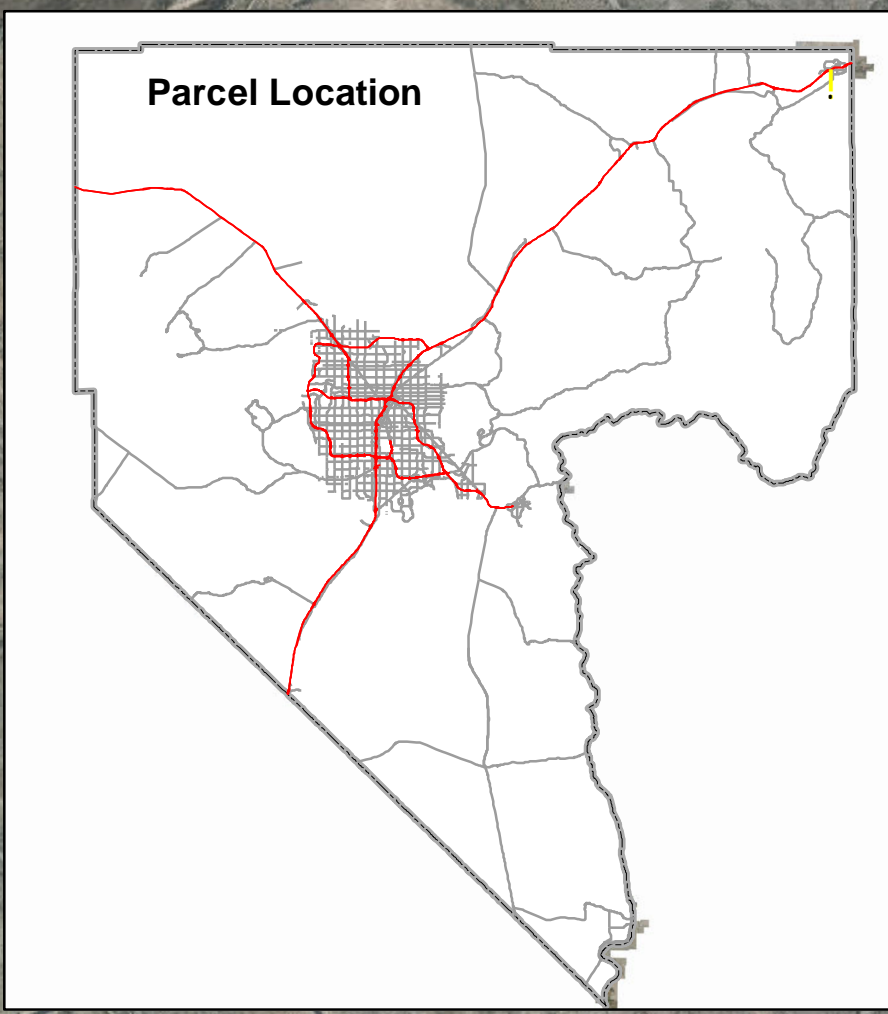
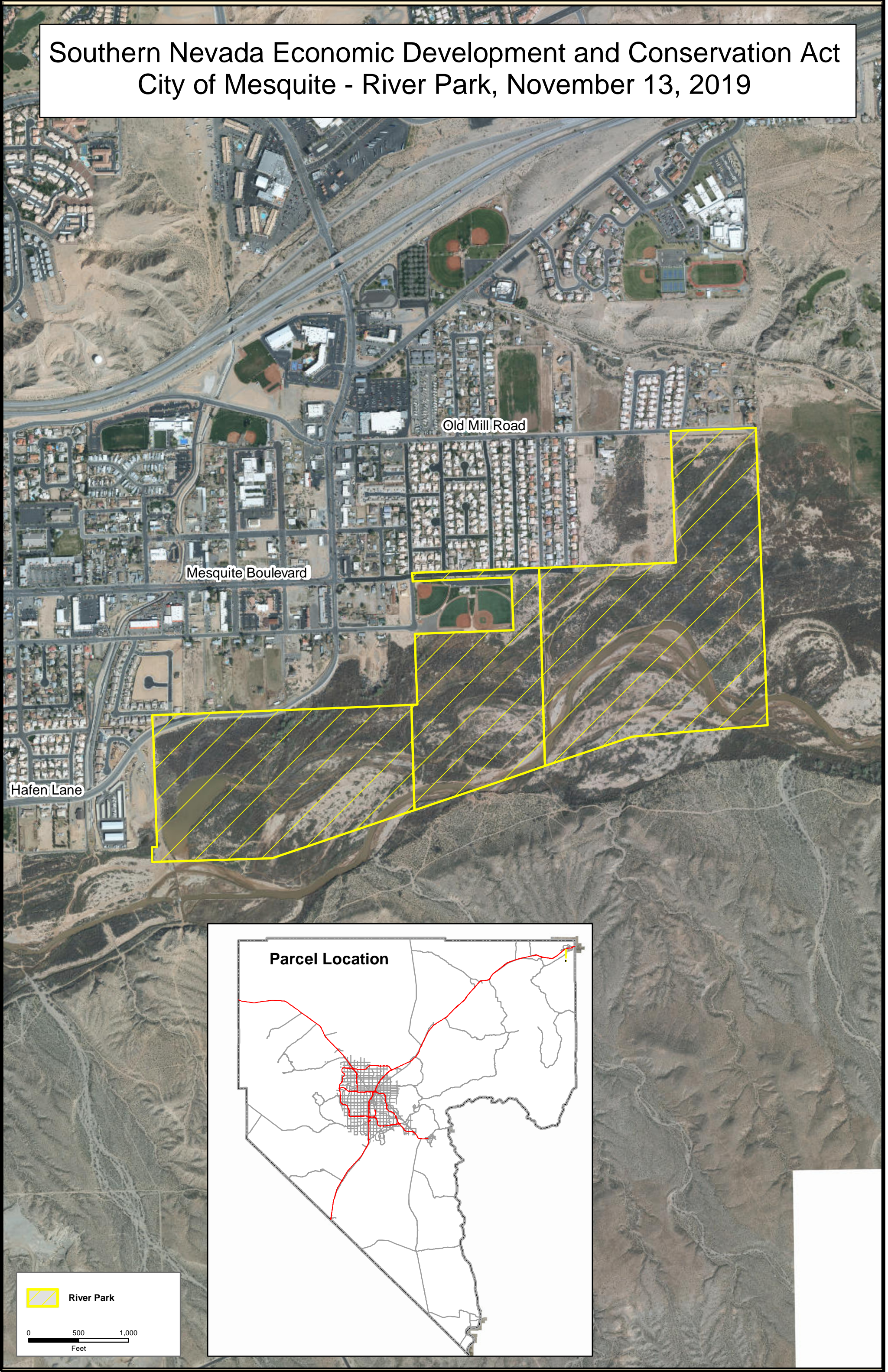


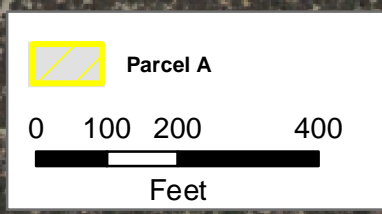
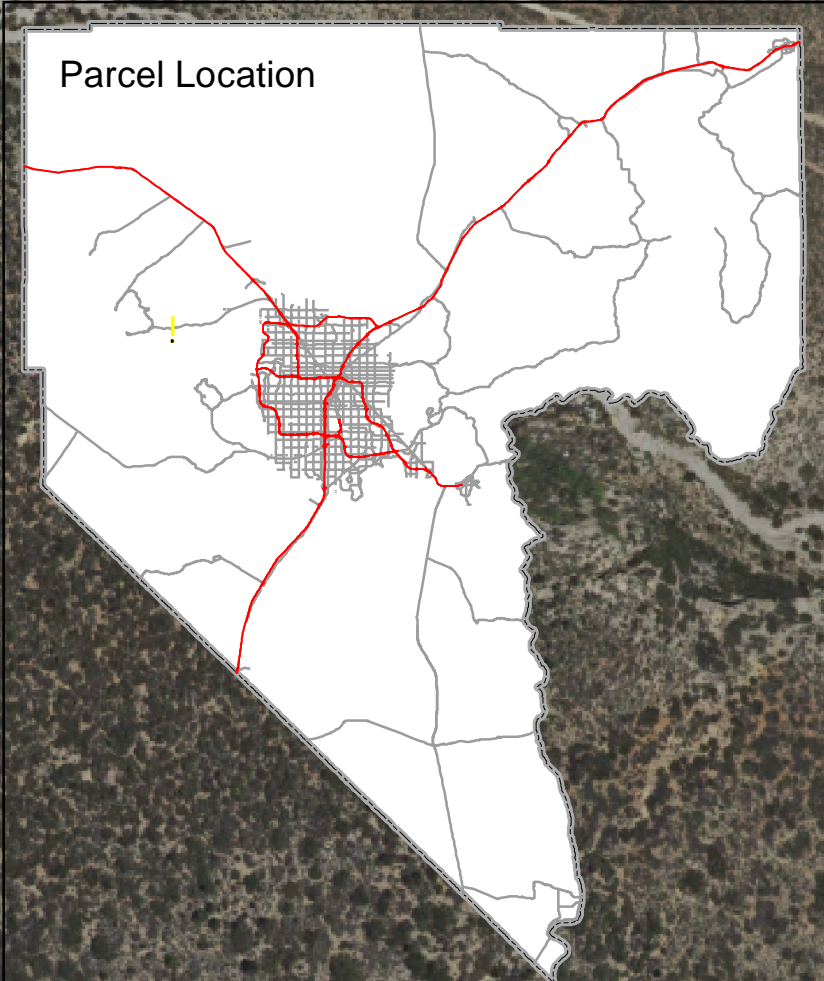
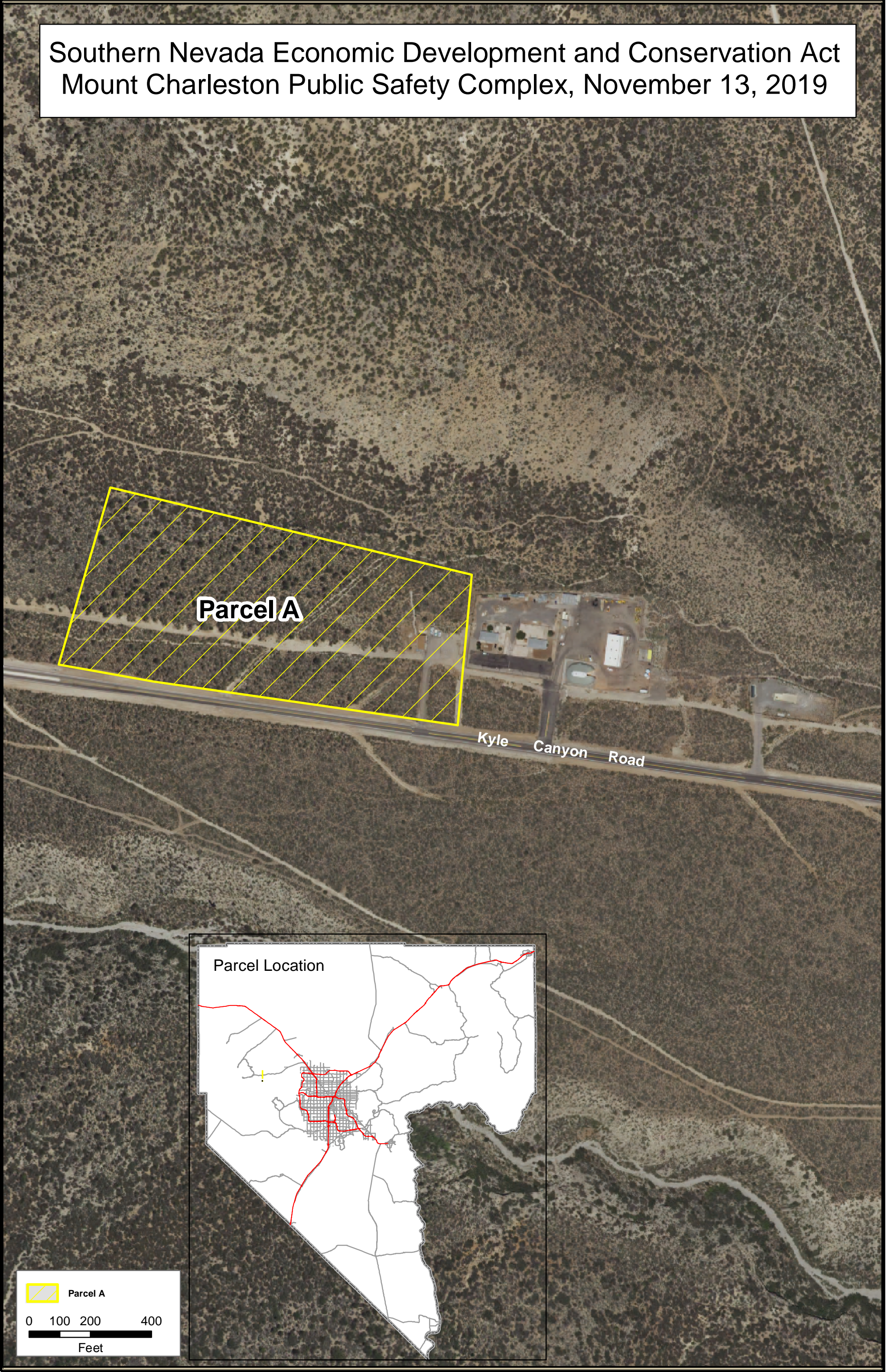
Southern Nevada Economic Development and Conservation Act Proposed Wilderness, November 13, 2019



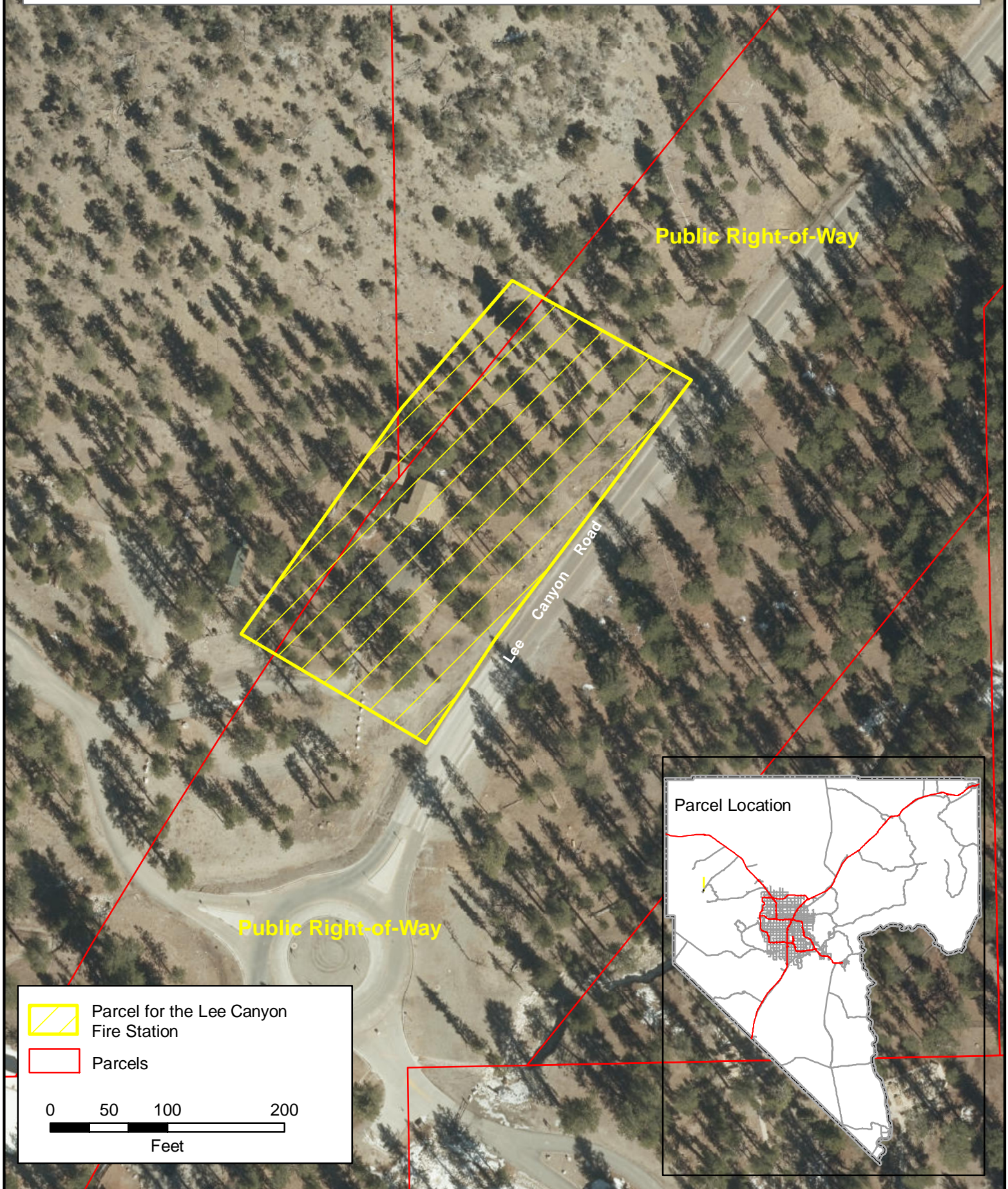
Southern Nevada Economic Development and Conservation Act City of Mesquite - River Park, November 13, 2019



Southern Nevada Economic Development and Conservation Act
Mount Charleston Public Safety Complex, November 13, 2019



Southern Nevada Economic Development and Conservation Act
Parcel for Lee Canyon Fire Station, November 13, 2019



Public Right-of-Way

Lee Canyon Road

Public Right-of-Way

Parcel for the Lee Canyon Fire Station

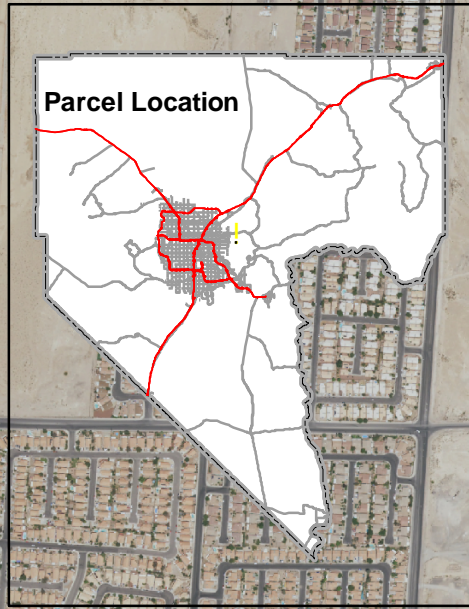
Parcels

0 50 100 200
Feet

Parcel Location

Southern Nevada Economic Development and Conservation Act Metro Parcels, November 13, 2019

Parcel Location



140-14-701-004

140-14-701-005

140-14-801-002

140-23-501-001

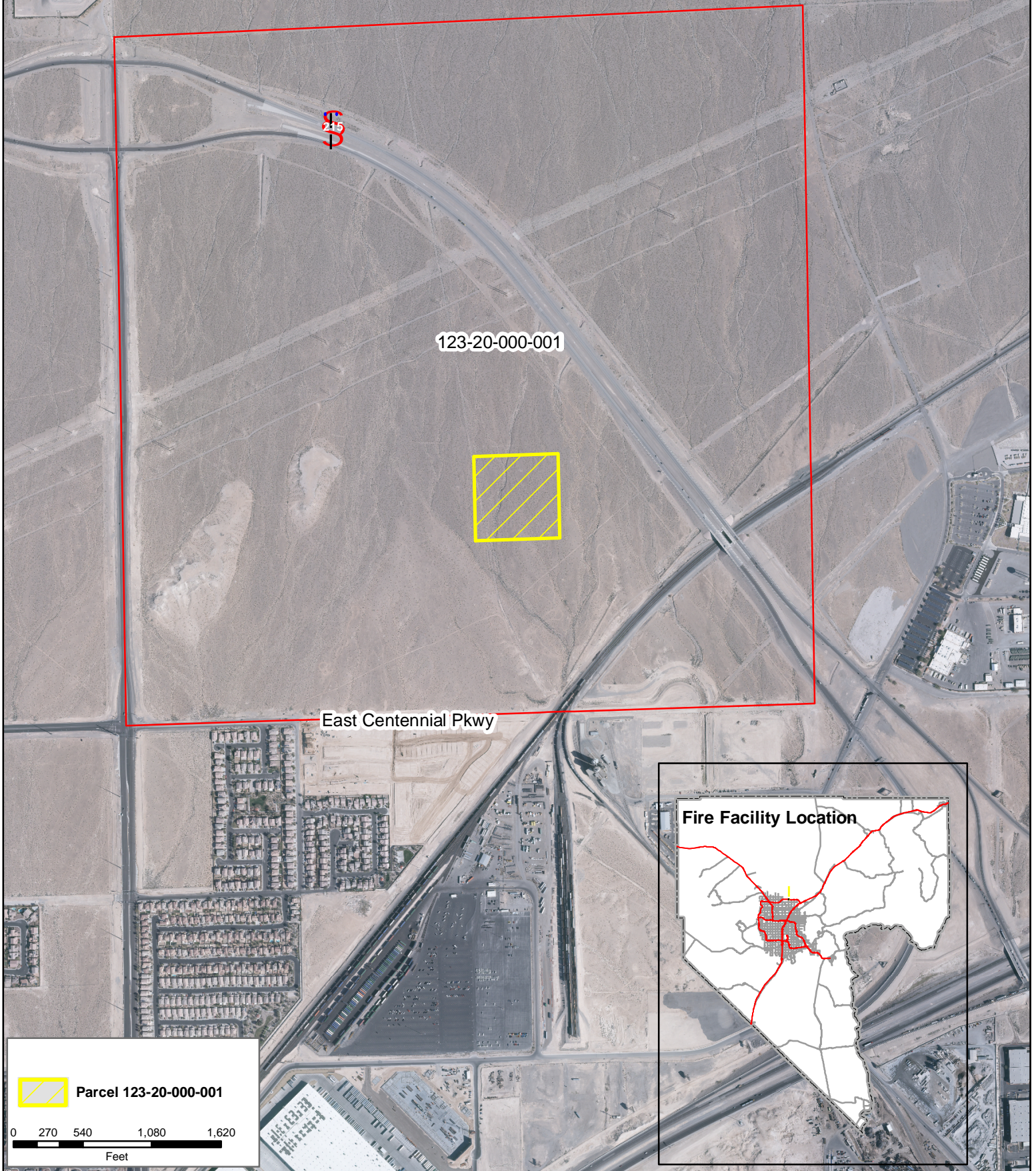
E Carey Ave

E Lake Mead Blvd

 Metro Parcels

0 320 640 1,280 1,920
Feet

Southern Nevada Economic Development and Conservation Act North Las Vegas Fire Training Facility, November 13, 2019



123-20-000-001

East Centennial Pkwy

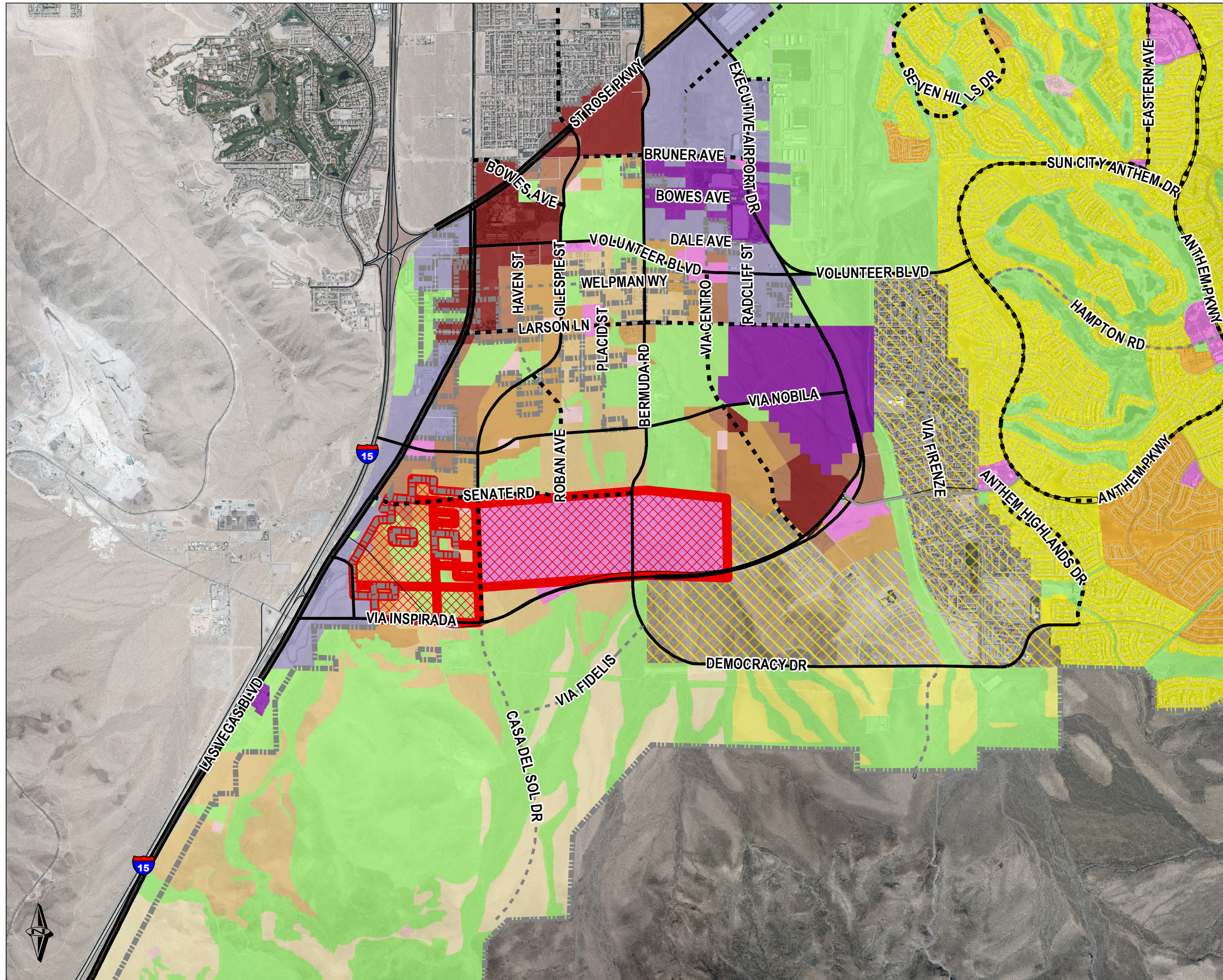
Fire Facility Location
















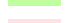





 Parcel 123-20-000-001

0 270 540 1,080 1,620
Feet

HENDERSON, NEVADA

Limited Transition Area (LTA) 2019 Amendment



-  Subject Area (approximately 748 acres)
- Master Transportation Plan (MTP) Streets**
-  Per Development Stds
-  Minor Collector
-  Major Collector
-  Minor Arterial
-  Major Arterial
-  Railroad
- Planned Land Use**
-  VLDR [Very Low Density Residential]
-  LDR [Low Density Residential]
-  MDR [Medium Density Residential]
-  NT1 [Neighborhood Type 1]
-  NT2 [Neighborhood Type 2]
-  NT3 [Neighborhood Type 3]
-  NT4 [Neighborhood Type 4]
-  PC [Planned Community]
-  PS [Public/Semi-public]
-  NC [Neighborhood Commercial]
-  COM [Commercial]
-  EC [Employment Center]
-  UC [Urban Center]
-  BI [Business/Industry]

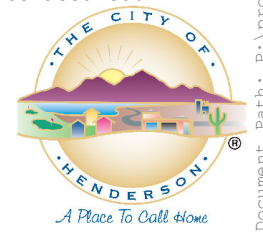
March 20, 2019

Source(s): City of Henderson Community Development & Services Department, Clark County Assessor's Office, and Clark County Geographic Information Systems Management Office.

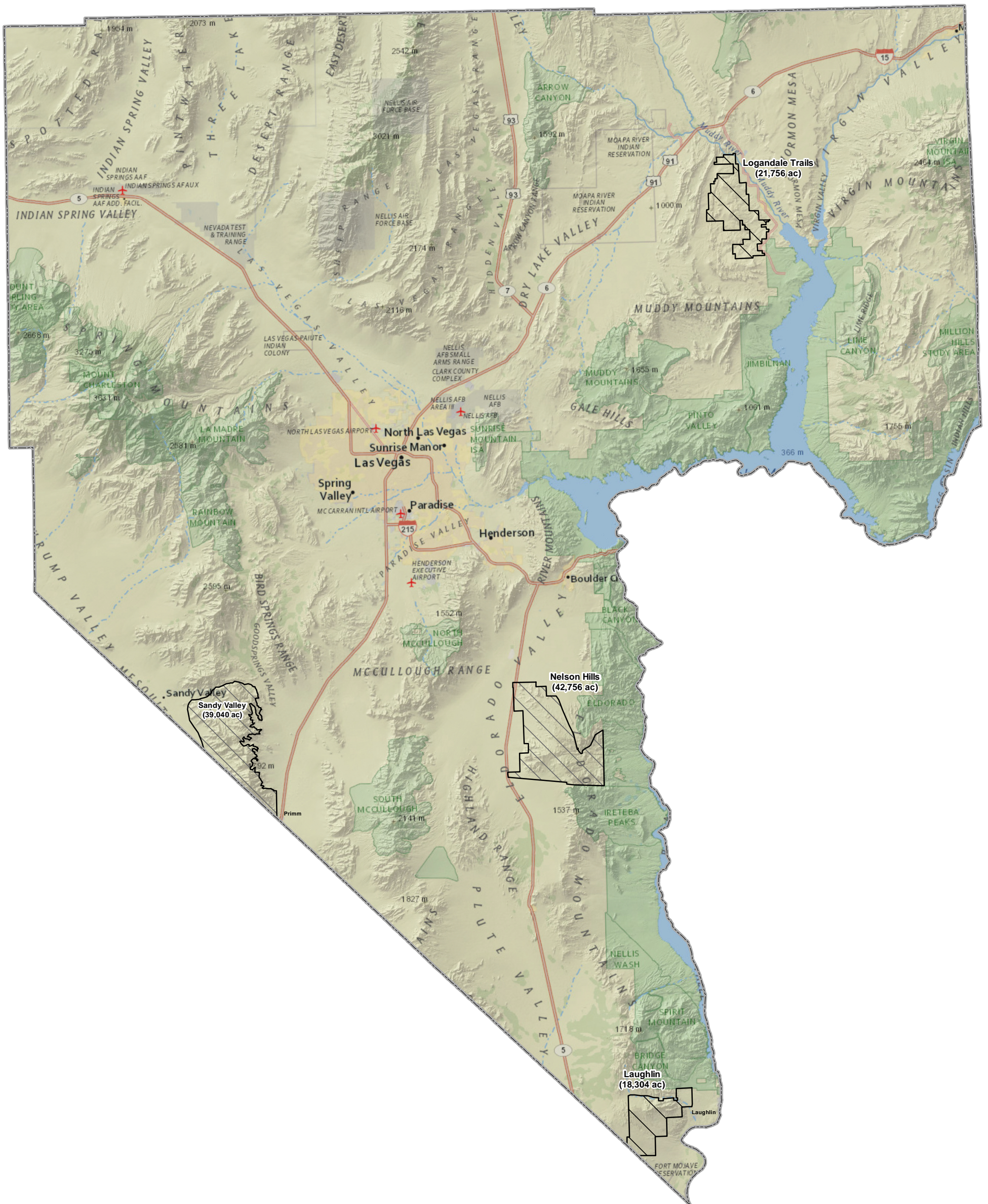
Based on Projected Coordinate System:
NAD83, StatePlane NV East FIPS 2701 Feet



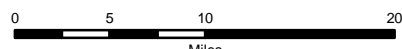
Note: This map is offered as a general reference guide only. Neither warranty of accuracy is intended nor should any be assumed.

City of Henderson
Community Development and Services
Geographic Information Services
240 Water Street
P.O. Box 95050
Henderson, NV 89009-5050
Tel. (702) 267-1500
www.cityofhenderson.com



Southern Nevada Economic Development and Conservation Act Logandale Trails, Nelson Hills, Sandy Valley, and Laughlin OHV Recreation Areas, November 13, 2019



 OHV Areas (121,856 Acres)
 Clark County Boundary




Scott

Gemmill

Reid Gardner

Tortoise

Silverhawk

Eastside

Equestrian

Newport

Mead

SSEA 230 kV Transmission

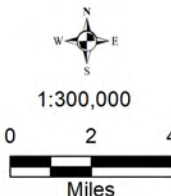
- Substation
- NV Energy Substation
- ENTP Potential Extension
- Existing Transmission Line
- ENTP Transmission Line ROW

Grid based on Universal Transverse Mercator projection, North American Datum 1983, Zone 11N meters.

30673-X0391 3/12/2018 BP

silver state energy association

The information depicted on this map represents data collected from various sources by the Silver State Energy Association and is intended for internal DRAFT planning purposes only. DRAFT



Regional Flood Control District Master Plan Facilities in the Coyote Springs Area of Critical Environmental Concern

BLM Coyote Springs ACEC

Legend

Detention Basins

STATUS

-  Completed
-  Under Construction
-  EFS
-  Proposed
-  Ten Year
-  Ten Year
-  ACEC

